

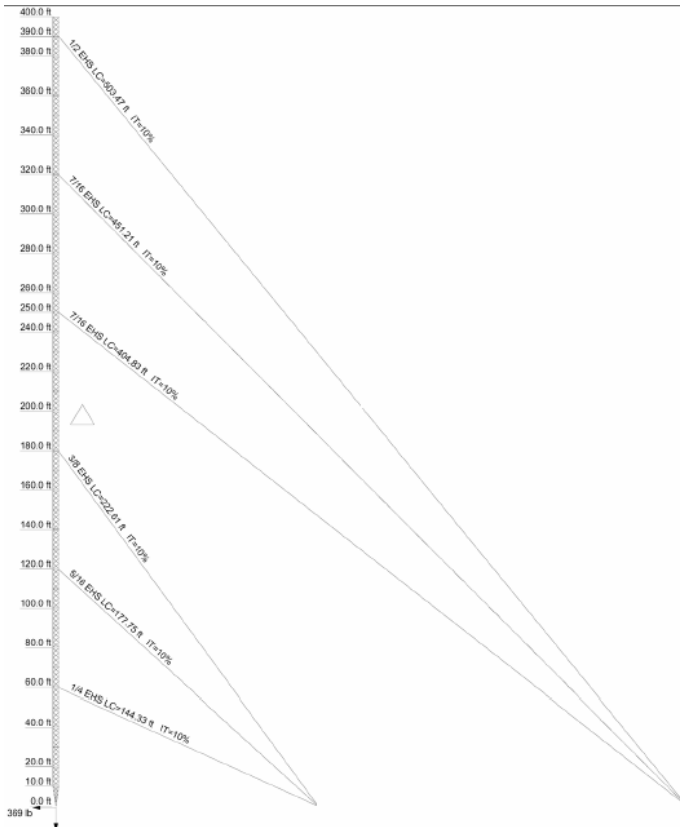
400' Nello Guyed Tower

400' NEW Nello guyed tower. Purchased two years ago and never installed. Includes base & anchor material, all sections, guy wire and all related hardware, base and anchor grounding kits.

New \$24,000. Will sell for \$16,000 and that includes loading. FOB Houston, TX area.

Tower Notes

1. Tower and foundation designs conform to ANSI/TIA/EIA-222-F, "Structural Standards for Steel Antenna Towers and Antenna Supporting Structures," for the following loading conditions:
 - a. 70 mph fastest-mile basic wind speed with no ice
 - b. 70 mph fastest-mile basic wind speed with 1/2" radial ice with a 25% reduction in wind loading
2. The design loading provided to Nello Corporation has been assumed to be based on site-specific data in accordance with ANSI/TIA/EIA-222-F and must be verified by others prior to installation.
3. Tower design includes the following antenna and appurtenance loading.
 - 400' - Beacon, 1" Conduit
 - 400' - 4' Lightning Rod
 - 400' - Five 5' x 1" whip antennas (CaAc = 0.5 sq ft ea) on five 2' standoffs with five 7/8" Coax
 - 300' - One 10' x 3" whip antennas (CaAc = 3.0 sq ft ea) on one 2' standoff with one 7/8" Coax
 - 200' - Two mid-level beacons



Telecom Product Profiles
719-539-6370